



ATLANTIC SUPPLY

QUALITY DRILLING SUPPLIES AND
MATERIALS TESTING EQUIPMENT
www.ScalesForBusiness.com
www.AtlanticSupply.com

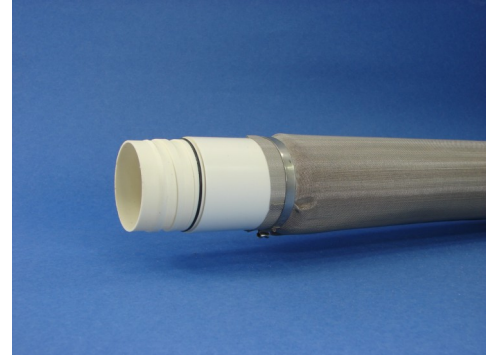
Pre-Pak Well Screen

This product is usable inside most direct push casings or it can be installed in an open hole. Each section is flush threaded with an O-ring seal for assembly to additional Pre-Pak Screens, Foam Bridges, Bentonite Quick Seals or flush threaded casings. **Flush threaded plugs, caps and points are available.**

Materials: Well Gravel - 20 x 30 silica sand
Well Screen - .010 slot Sch. 40 PVC well screen
Outer Layer - 65 mesh stainless steel screen

Smallest Filtration Capacity: Fine Sand

Pipe Size	Length	I.D. / O.D.	Fits Casing	Net Open Area (in ² / ft)
3/4"	5'	0.810 / 1.400	2-1/4"	0.991
1"	5'	1.033 / 1.700	3-1/4" or NW	1.156
1-1/2"	5'	1.592 / 2.400	3-1/4" or NW	2.806
2"	5'	2.049 / 2.800	4-1/4" or NW	3.520



Plus 10 Pre-Pak Well Screen (U.S. Patent No. 6,416,661)

With 10 times the open area and 10 times the filtration capacity, these 20% open area screens are ideal for Long Term Monitoring (LTM) of natural attenuation using low purge or passive sampling. High open area minimizes stagnant water to cut sampling time in low-yield wells.

Materials: Outer Layer - stainless steel screen
Inner Layer - stainless steel screen
Well Screen - .250 slot Sch. 40 PVC well screen 20% net open area
Silica Sand Pack - Standard (20 x 30) or Fine (30 x 65)

Smallest Filtration Capacity: Silt

Pipe Size	Length	I.D. / O.D.	Fits Casing	Open Area
3/4"	5'	0.810 / 1.400	2-1/4"	20%
1"	5'	1.033 / 1.700	3-1/4" or NW	20%
1-1/2"	5'	1.592 / 2.400	3-1/4" or NW	20%
2"	5'	2.049 / 2.800	4-1/4" or NW	20%



Expendable Drive Points For Direct Push Casing

Materials: Cold rolled steel

Nominal Size	Dimensions	Fits Direct Push Casing Sizes
1-5/8"	1.050 X 1.620	SP-16 / SP-22*
2-1/2"	1.480 X 2.450	2-1/4"
3-1/2"	2.600 X 3.560	3-1/4"



1-5/8"*



2-1/2"



3-1/2"

*For use with direct push screen point only

LARGO
800-752-9416

RIVIERA BEACH
800-535-7384

ORLANDO
800-569-8950

JACKSONVILLE
888-260-5584

ALABAMA
866-917-3447



ATLANTIC SUPPLY

QUALITY DRILLING SUPPLIES AND MATERIALS TESTING EQUIPMENT

www.ScalesForBusiness.com
www.AtlanticSupply.com

Expanding Foam Bridge

This compressible foam seal wrapped in a polyethylene sleeve expands instantly when it exits the bottom of the drive casing to provide positive placement of a barrier that prevents any solids from entering the screened area. It provides a positive temporary barrier when used above the water table in conjunction with granular Bentonite, pellets or chips.

Materials: Polyurethane foam with polyethylene sleeve on 9" of flush threaded PVC



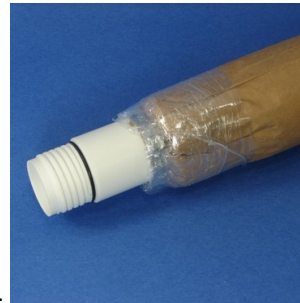
Pipe Size	Overall Length	Foam Diameter	Foam Length	Fits Casing O.D.
3/4"	9"	2-1/2"	3"	2-1/4"
1"	9"	3-1/2"	3"	3-1/4" or NW
1-1/2"	9"	3-1/2"	3"	3-1/4" or NW
2"	9"	4"	3"	4-1/4" or NW

Bentonite Quick Seal

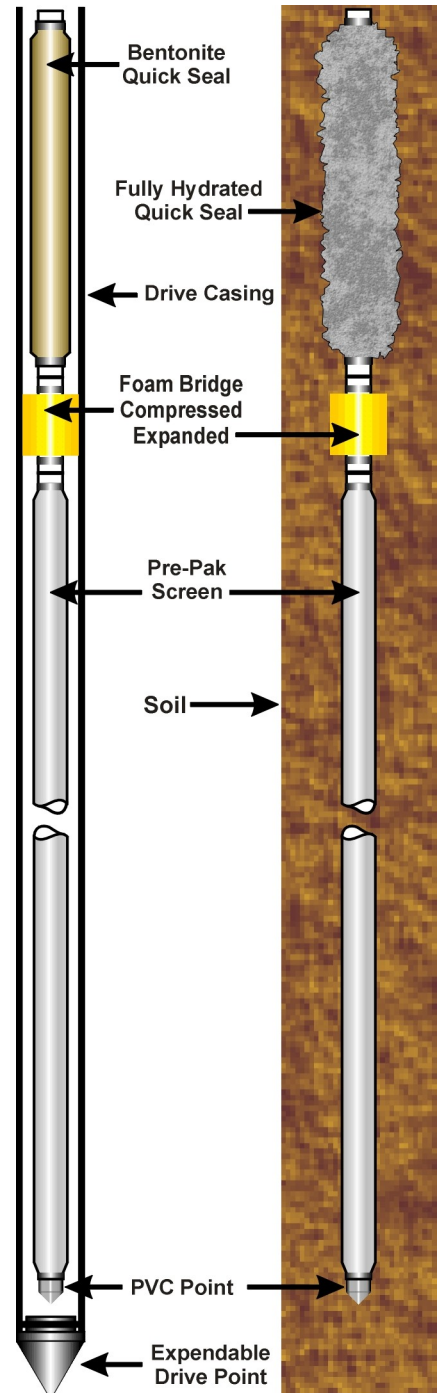
Threads into the casing string above the Pre-Pak or slotted well screen. Bentonite Quick Seals provide impermeable seals. These seals prevent grout from intruding into the screened interval. Multiple units may be threaded together in the well for additional sealing.

Materials: Paper sleeve filled with silica sand and granular Bentonite on flush threaded Sch. 40 PVC casing.

Expansion Time: Approximately 15-30 minutes when fully immersed below the water table.



Pipe Size	Overall Length	Quick Seal Diameter	Hydrated Diameter	Fits Casing O.D.
3/4"	2-1/2'	1.400	+/- 2-1/2"	2-1/4"
1"	2-1/2'	2.150	+/- 3-1/2"	3-1/4" or NW
1-1/2"	2-1/2'	2.150	+/- 3-1/2"	3-1/4" or NW
2"	2-1/2'	2.800	+/- 4"	4-1/4" or NW



Please call us for all your drilling supplies

We specialize in geotechnical, directional, environmental, monitoring well, water well, sink hole and foundation supplies as well as drilling fluids and additives.

All components may be purchased separately.

LARGO
800-752-9416

RIVIERA BEACH
800-535-7384

ORLANDO
800-569-8950

JACKSONVILLE
888-260-5584

ALABAMA
866-917-3447